

2023 Handrail Glass systems



oxidal.ir



www.oxidal.ir

Contact Us:

+98 - 21 77 03 00 13
+98 - 21 77 03 00 14

+98 - 919 005 34 85

OXIDAL
Architectural Glass Systems

OXIDAL COMPANY

Oxidal company, relying on its 10 years of experience to realize the demands of architects and designers of modern spaces in order to create maximum visual transparency and remove excesses from the field of view, in the fields of design, production and implementation of products including: glass and smart partitions with Exclusive production profiles, types of glass railing systems, types of glass doors in different models and colors, and showcases of business units operate in the direction of design and innovation of glass holders.

شرکت اکسیدال

شرکت اکسیدال با تکیه بر تجربه ۱۰ ساله خود برای تحقق بخشیدن به خواسته های معماران و طراحان فضاهای مدرن به منظور ایجاد حداکثر شفافیت بصری و حذف زوائد از میدان دید، در زمینه های طراحی، تولید و اجرای محصولات شامل: پارتیشن های شیشه ای و هوشمند با پروفیل های تولیدی انحصاری، انواع نرده و محافظ شیشه ای، انواع درب های شیشه ای در مدل ها و رنگ های مختلف و ویتترین های واحد های تجاری در مسیر طراحی و نوآوری نگهدارنده های شیشه فعالیت می کند.



because

We Present

**WORLD OF
GLASS RAILING
SOLOTIONS**

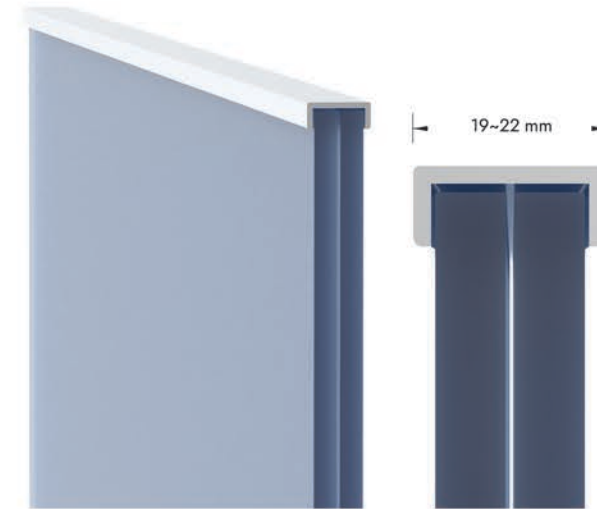
architectural
**GLASS
SYSTEMS**

سیستم های ساختمانی فرداد





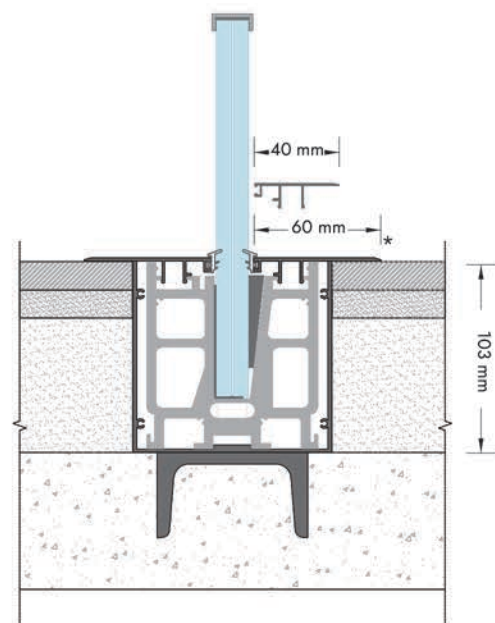
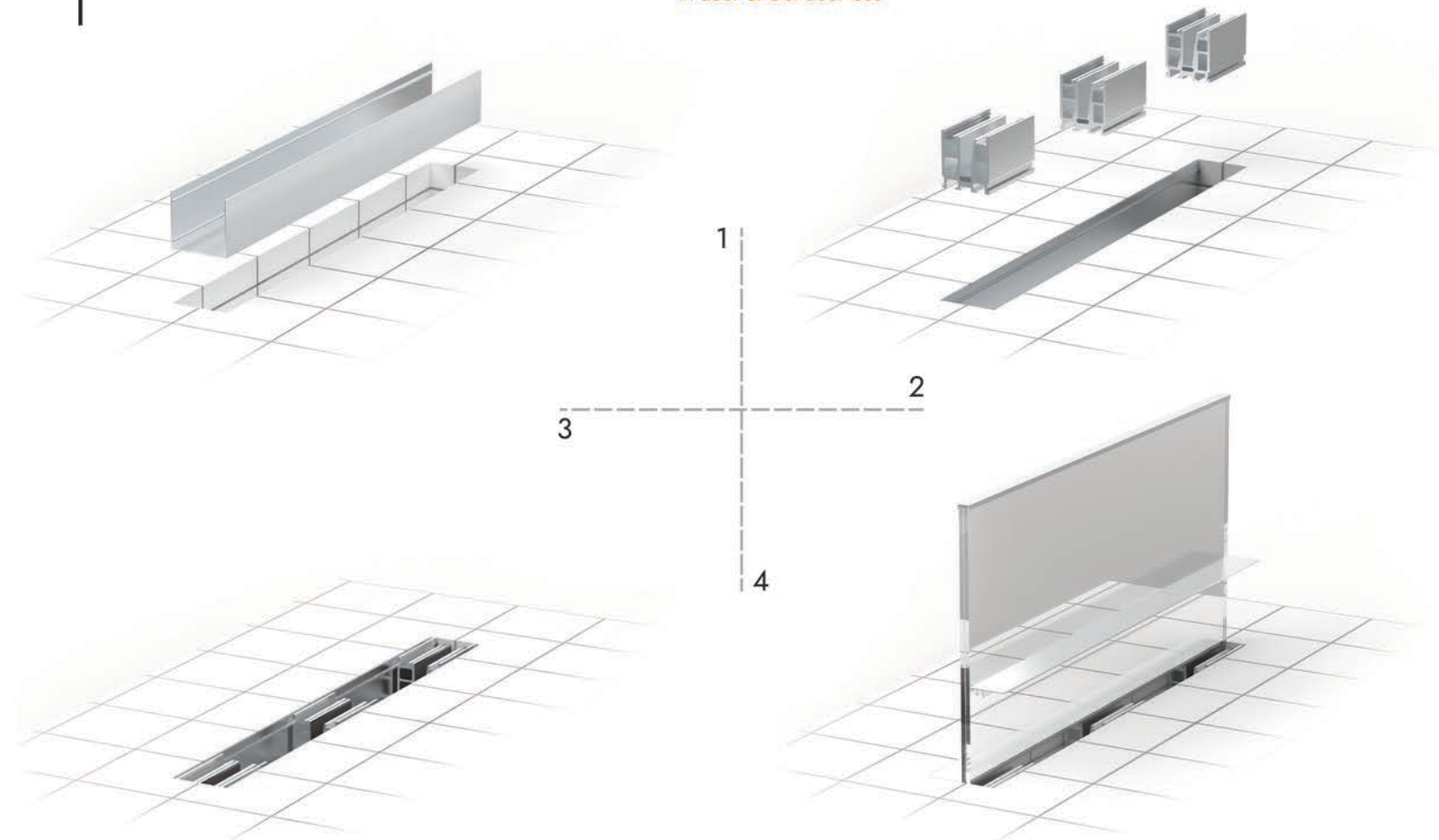
Details & installation guide of In Floor Glass Supporting System



• BTS Elegant in-floor glass supporting System distinguish your precious buildings with their durability, aesthetic view and brand-new system.

Besides, them provides more view space. in-floor fixing parts are closed with caps which have special gaskets on it. Provides unlimited view and stability. The best solution Elegant CA50.

- Newest and Safest System in Railing
- Unlimited View
- Aesthetic Design
- Easy Cleaning
- In door & Out door Use



* It can be impemented in two sizes 40mm & 60 mm.

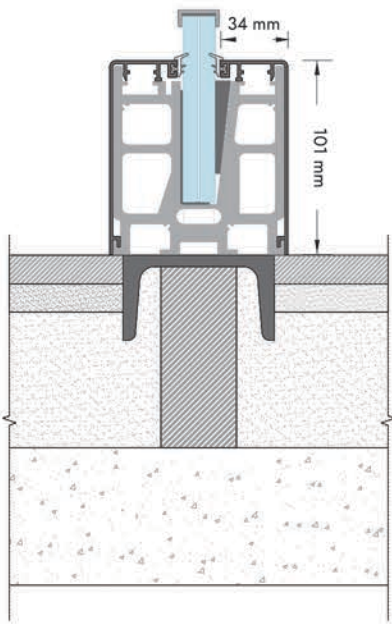
CA50

In - Floor Glass

Supporting System



3



* It can be implemented in two sizes 40mm & 60 mm.

C50

On - Floor Glass

Supporting System

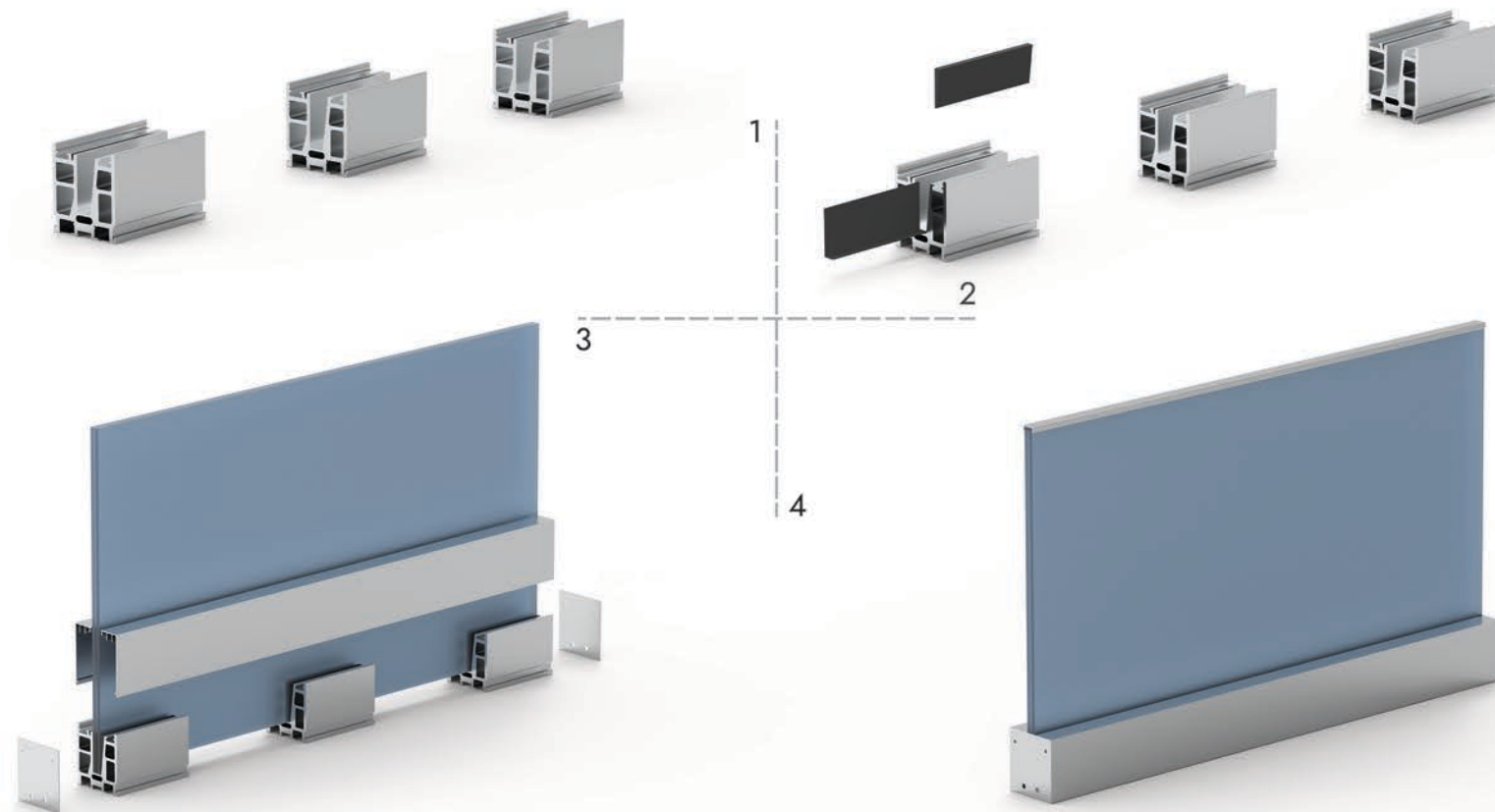
Details & installation guide of On Floor Glass Supporting System



• BTS Elegant C50 type glass railing is designed for higher dimension than standard railing and it's can support glasses depth till 100mm.
the series **Lucid C50** which provide your high standard prestigious projects, is produced to supply highest resistance and safety.

- Newest and safest system in railing
- Unlimited view
- Aesthetic design
- Easy cleaning
- In door & Out door Use

4





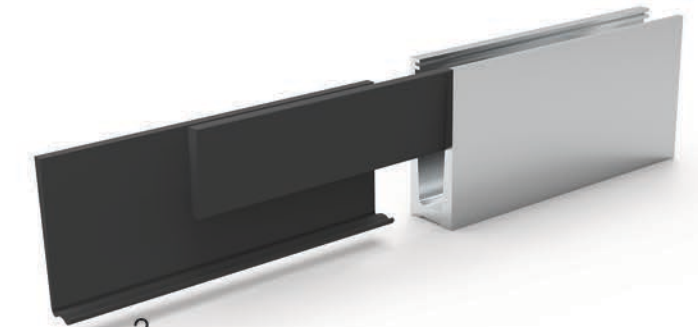
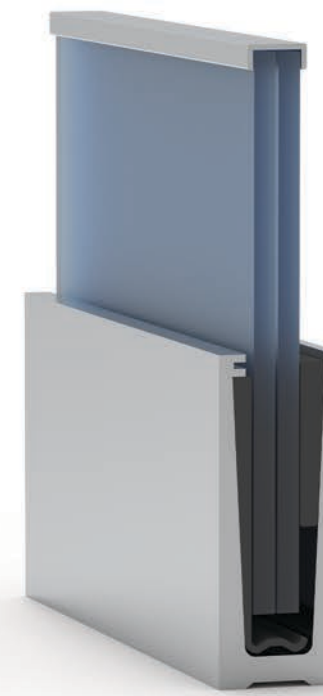
5

Details & installation guide of Easy Glass Railing System

· Slim Easy Glass systems has combined modern design, optimal transparency and affordability in one railing system. It is ideal for private residences, commercial buildings and shops.

The base shoes for on-floor, top and fascia mounting are slim, light and easy to manoeuvre. In fact, the Slim base shoes are a great piece of design in their own right.

- Affordable Safe Glass Railing
- Integrated Water Drainage
- Usable Indoor and Outdoor
- Lightweight



3

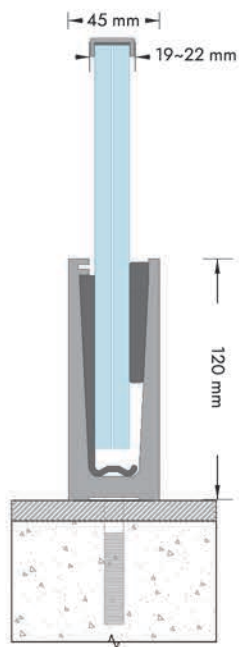
1

2

4



6



Easy Glass Slim

Supporting System

* It is also available in H: 125 mm & W: 55 mm Dimensions



7

AL50

Point fix

Glass Railing Systems

in
2
Types

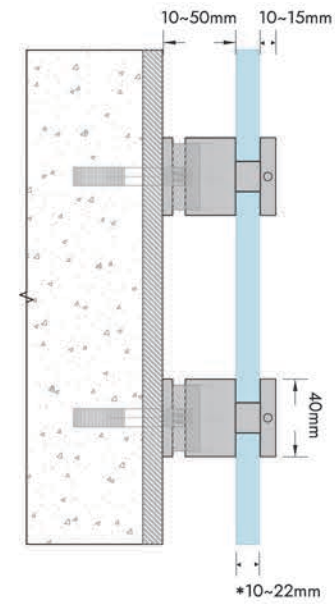
type 1

∅ 40mm



type 2

40mm



• Glass can have one or two layers

Details & installation guide of Point fix Glass Supporting System

• **AL50** model is an alternative solution for the external connection system. Excute of this system is very easy with a fixing accessory. It's provide the view of balconies and stairs and expands the areas.

- Affordable Safe Glass Railing
- Integrated Water Drainage
- Usable Indoor and Outdoor
- Lightweight

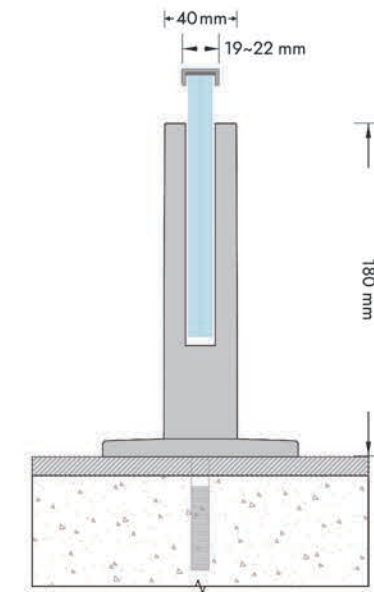


8

• New Elegant series **V300** is serving newest, minimalist, aesthetic, simple and economic glass railing for your projects.

V300 Spigots are for especially designed for swimming pools, outdoor separation, garden separations.

Oxidal V300 Spigots bring time, value, aesthetic and difference to your projects with advantages of easy installation.

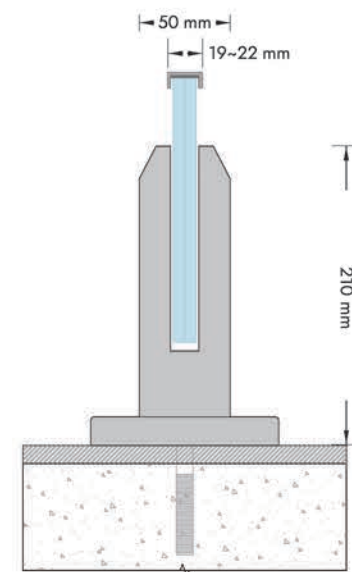


Details & installation guide of Spigot Glass Supporting System



- Single & Double Glass Support
- Tempered Glass use
- 6065 or 7075 Anodized Aluminum
- Electrostatic Cover Coating

- High-gloss Polishing
- Standard & Customized Dimensions
- Basic Custom Design
- In door & Out door Use



Spigot

Glass Railing Systems

in
3
Types

type 1 | V300

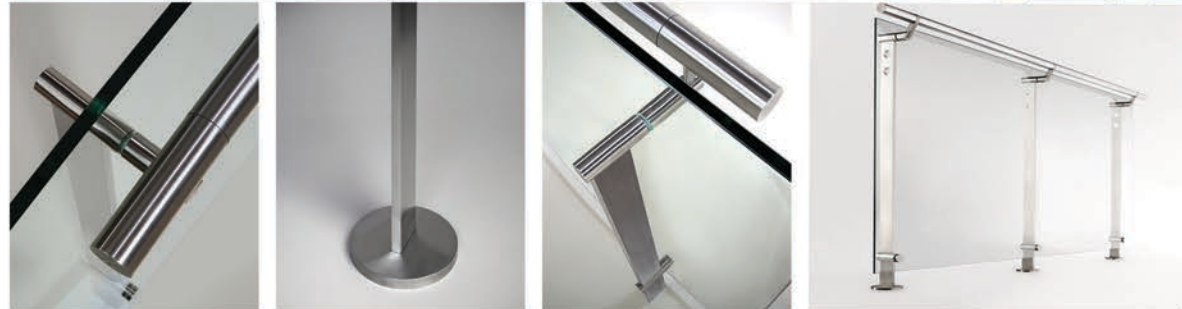


type 2 | V302



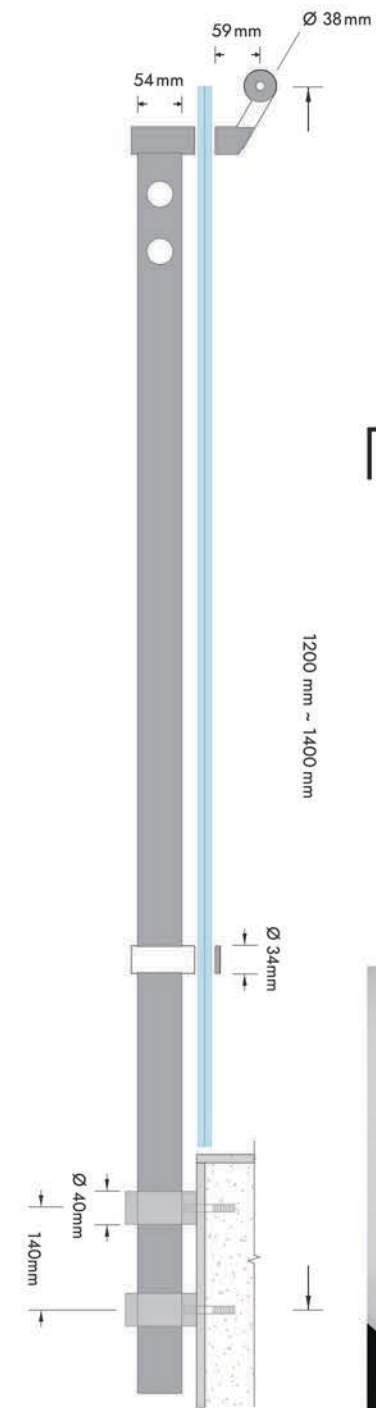
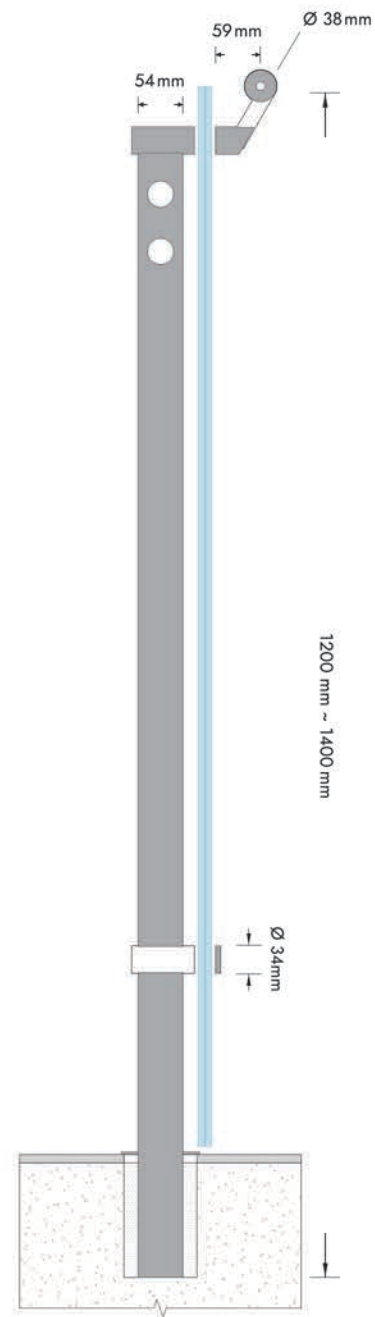
type 3 | V304





type 1 | V400

type 2 | V420



- Single & Double glass
- Tempered Glass use
- 304 - 316 Stainless Steel
- Electrostatic Cover Coating
- High-gloss Polishing
- 1200mm ~ 1400 mm
- Post Options
- In door & Out door use

Details & installation guide of Spigot Glass Supporting System



Vertex Series are Aluminium based design railing systems going on with innovations! **V400** and **V420** models are the most popular models in this Vertex Series! V400 has one pointfix & It's has a different design.

V420 has two pointfix. Also You can use two or more post between glasses or you can use one post in every two glasses.

Each post for glass railing is Between 1000 mm ~ 2200 mm.

in
2
Types

D Line

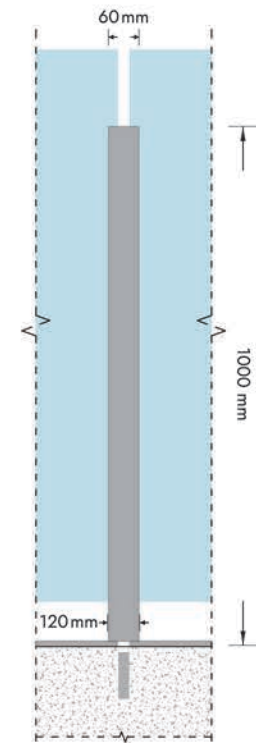
Glass Railing Systems





Details & installation guide of Henza Glass Supporting System

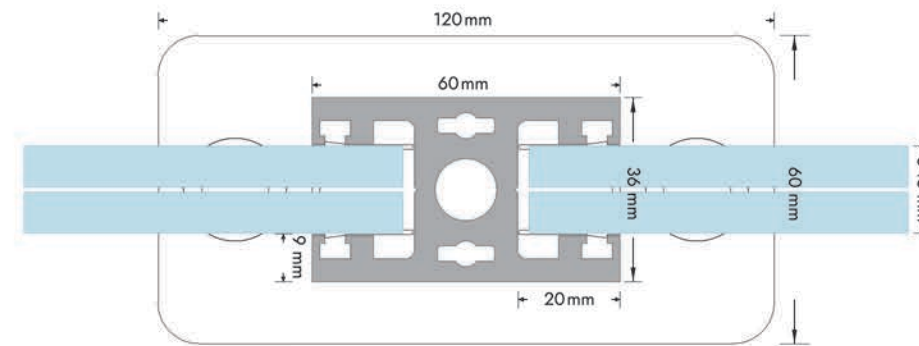
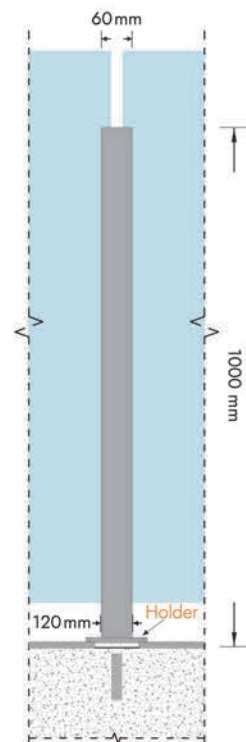
HENZA



Without Holder

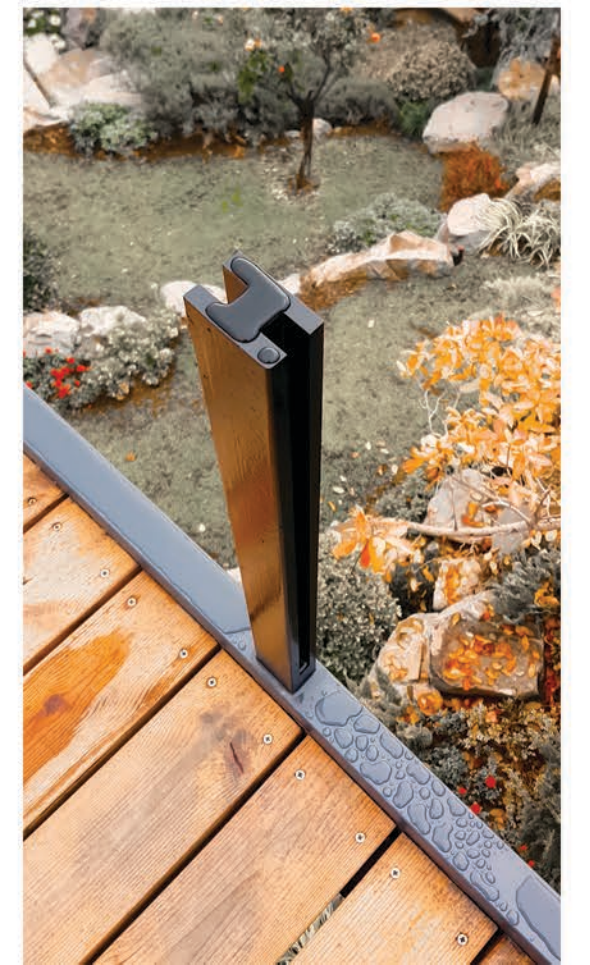
- 1000 mm ~ 2200 mm Post Options
- Laminated and Tempered Glass Options
- Aluminum with 6063 Alloy
- Sealing and Seismic Tapes
- High Stability
- Stainless steel

With Holder



Hanza glass shelter can be used in office buildings, residential buildings and also in villas. The places used are:

- the Terrace
- the Staircase
- Around the Pool
- Roof Garden.
- the Balcony



P140

Henza

Glass Railing Systems

in
2
Mods

Henza glass railing system is a new products that has a very simple and efficient form.

Henza is a linear and modular system that is provides continuous and regular design for your projects.

considering that are installed as vertical elements and due to the very high type and strength of the supporting bases of this product, all the force applied by the glass has been transferred to the bases And it is transmitted to the floor through suitable connections.

Experience

working with ● ● ●

Architects

1. HADI TEHRANI

Kamran Street N°4

2. MAJID & HAMID FATOURECHIANI

Dove House

3. MR AKHOUNDI

Palma Tower (Sepidar)

4. MR CHOUBINE

Modernite Garden Tower

5. ASEMANE HAFTOM CO

Asemane Haftom Building

6. MR TALEBI

Samexxon



4



3



2



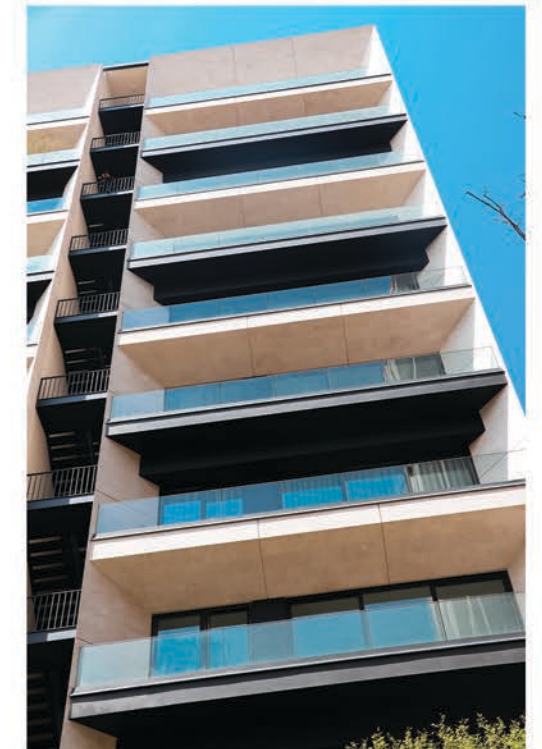
5



6

We Make it

1



16



15

Experience

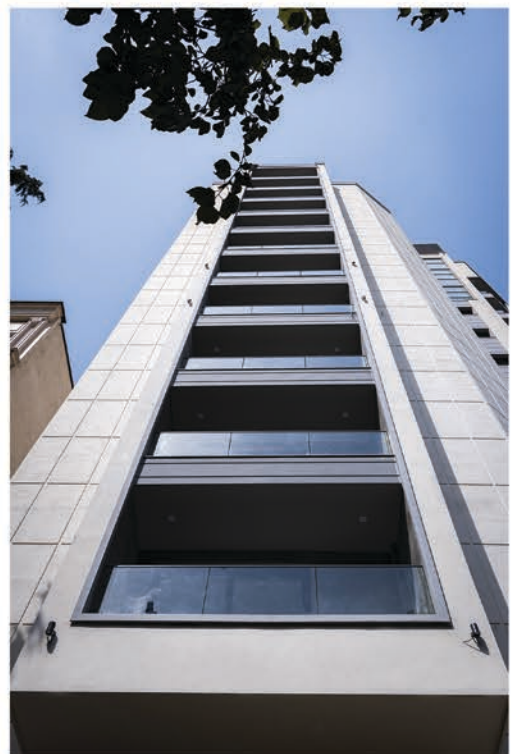
working with

Architects

- 7. FARHAD AHMADI
University of Science & Technology
- 8. MR FAROKHI
Zaferanie Residence
- 9. MIHAN CO
Prima Tower
- 10. TADBIR SAHEL CO
Azad University Tehran North
- 11. KAMRAN HEIRATI
Safadasht Villa
- 12. BEHSAZ ANDISHAN
Jaban Villa



10



9



8



11



12



7

So keep dreaming...

